

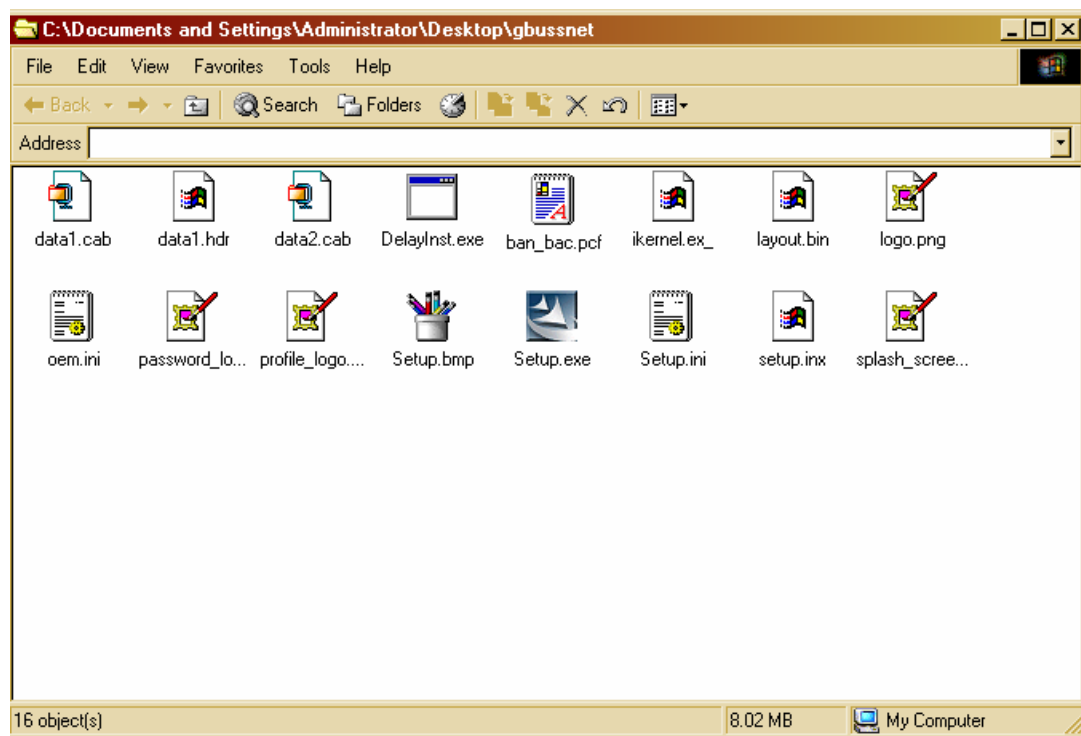


## The George Washington University VPN Installation and Activation Guide

**Use of the GW provided Virtual Private Network (VPN) software is permitted to connect to internal information technology services in support of The George Washington University's activities only. Only individuals that have fully executed the VPN Access Agreement are authorized to use the VPN.**

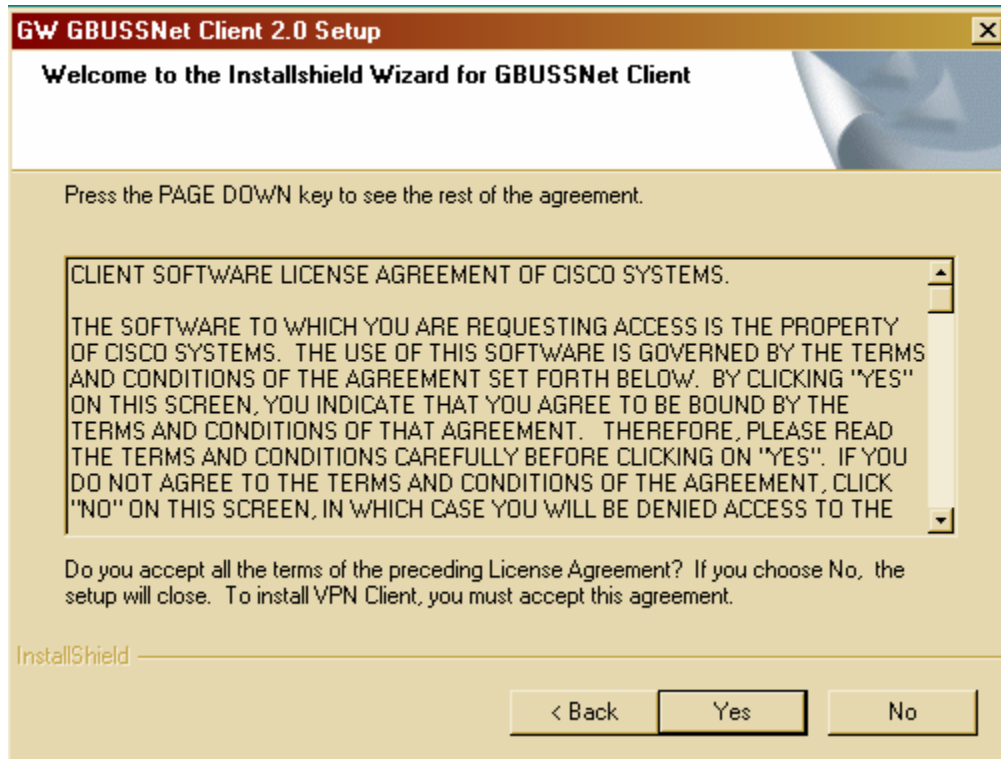
The following steps demonstrate the installation of GW's VPN application for use in accessing university computing resources. If you have any trouble during installation, please contact Andrew Salzman ([asalzman@gwu.edu](mailto:asalzman@gwu.edu)).

- 1) Insert the BAN BAC VPN CD into your CD drive.
- 2) Explore the CD. The contents should look like:

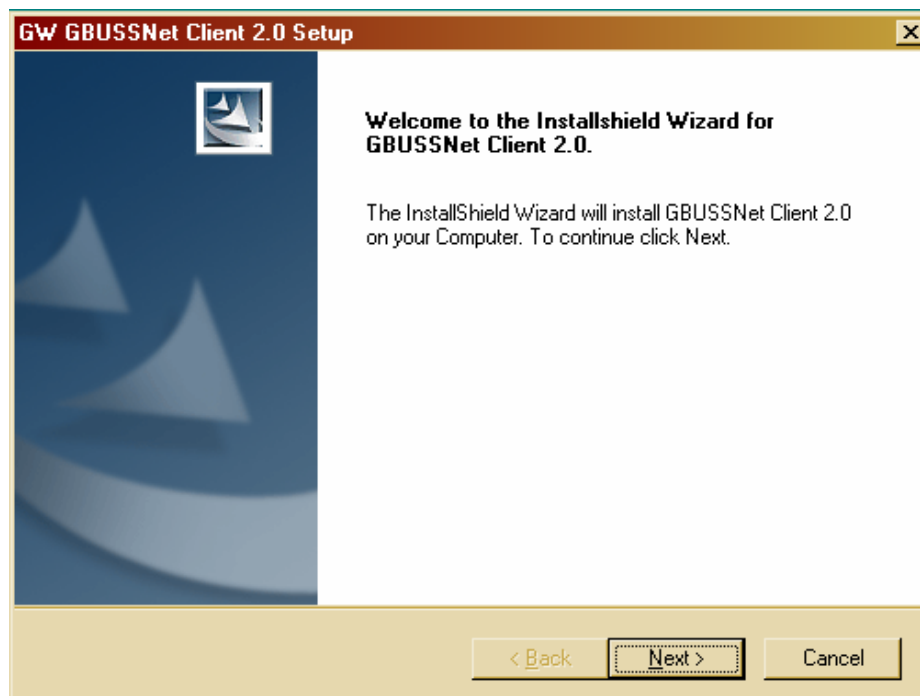


- 3) Double click the Setup.exe icon.

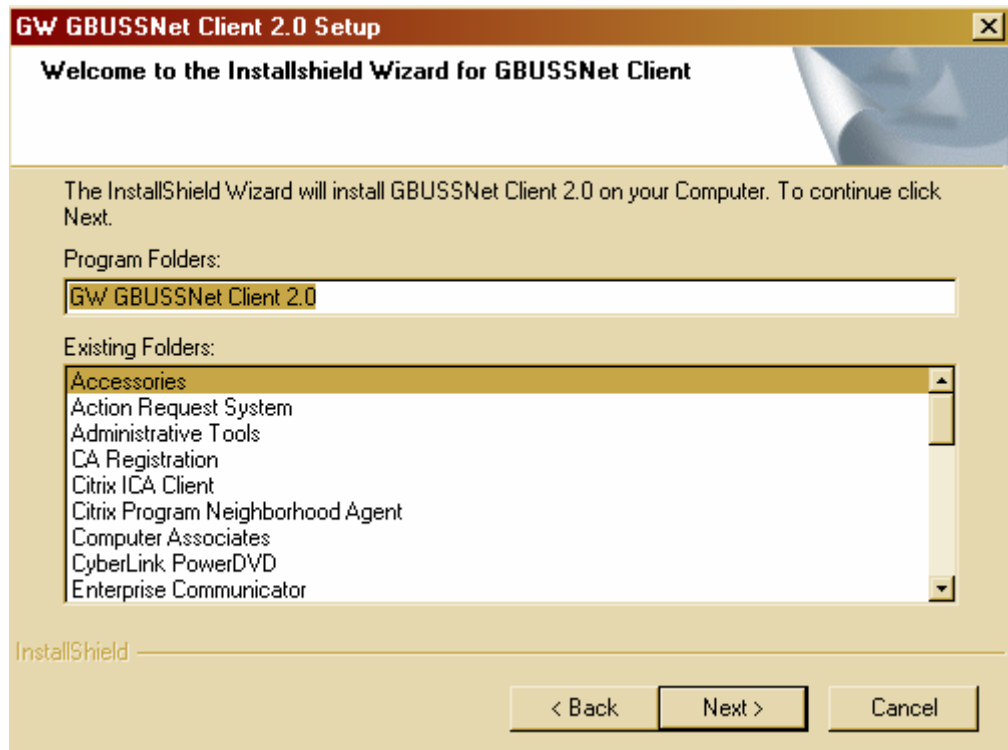
- 4) Read, understand and if you agree to the license agreement, click Yes.



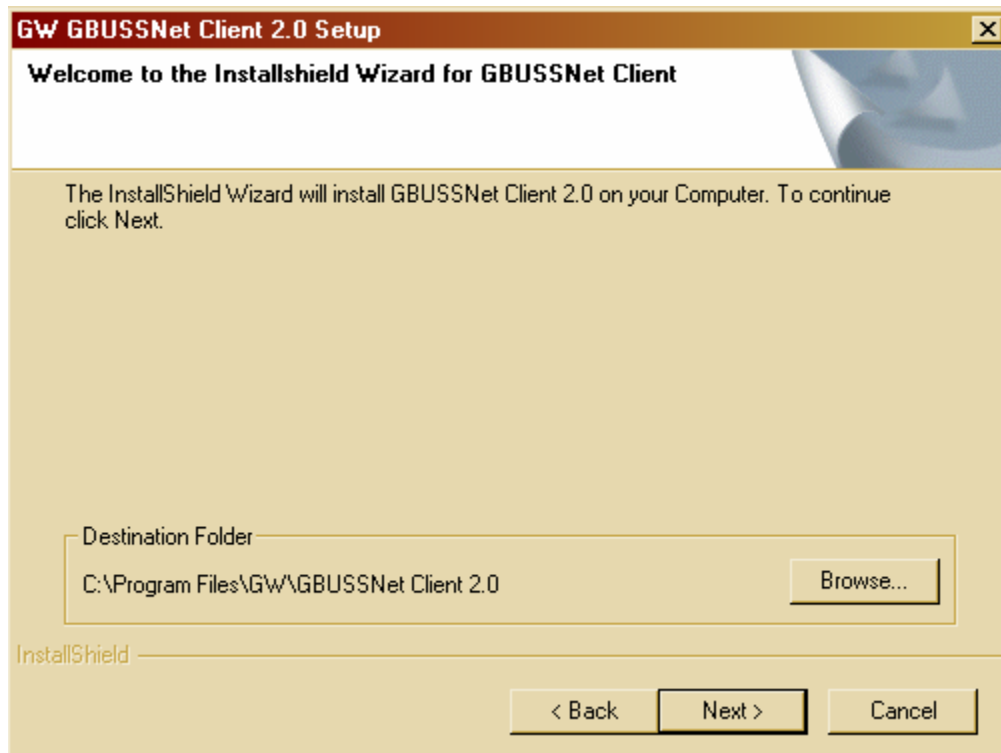
- 5) The install shield will appear, click Next.



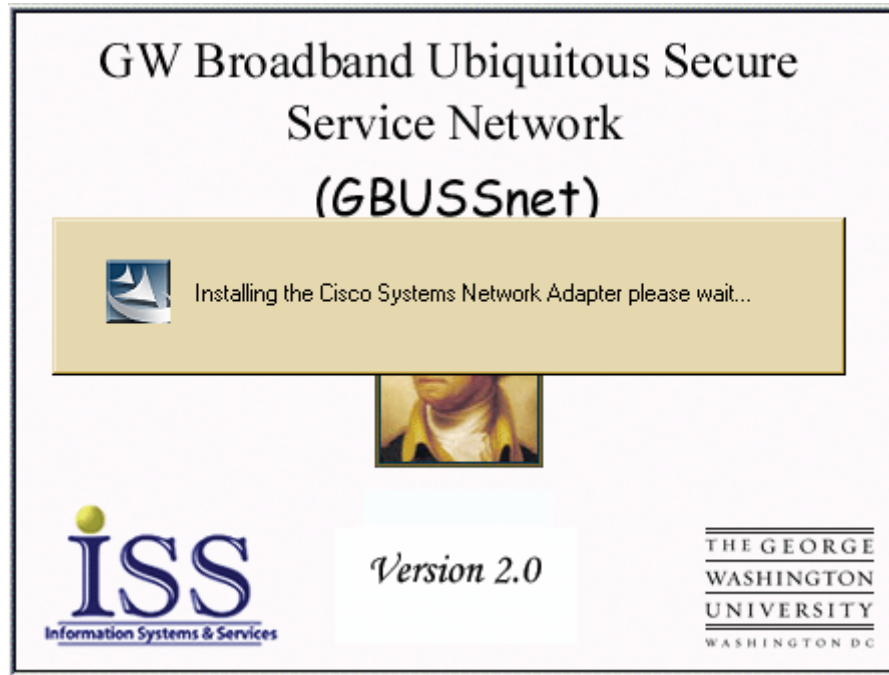
6) The default install directory will appear, click Next.



7) The default destination folder location will appear, click Next.



8) During installation, the a number of different screens will appear (example below).

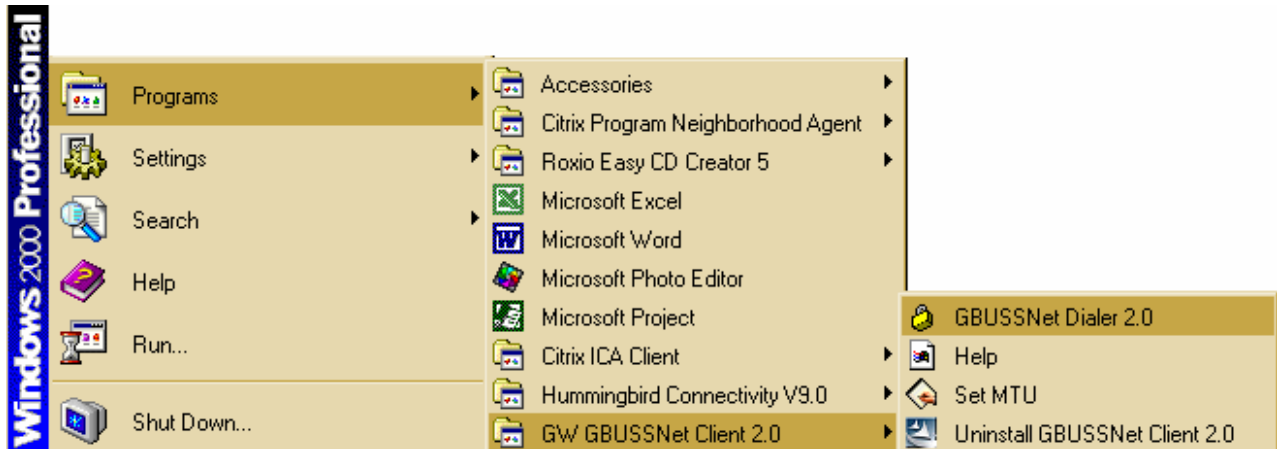


9) When the install is complete, the following screen will appear. You will need to restart the computer before running the VPN client.

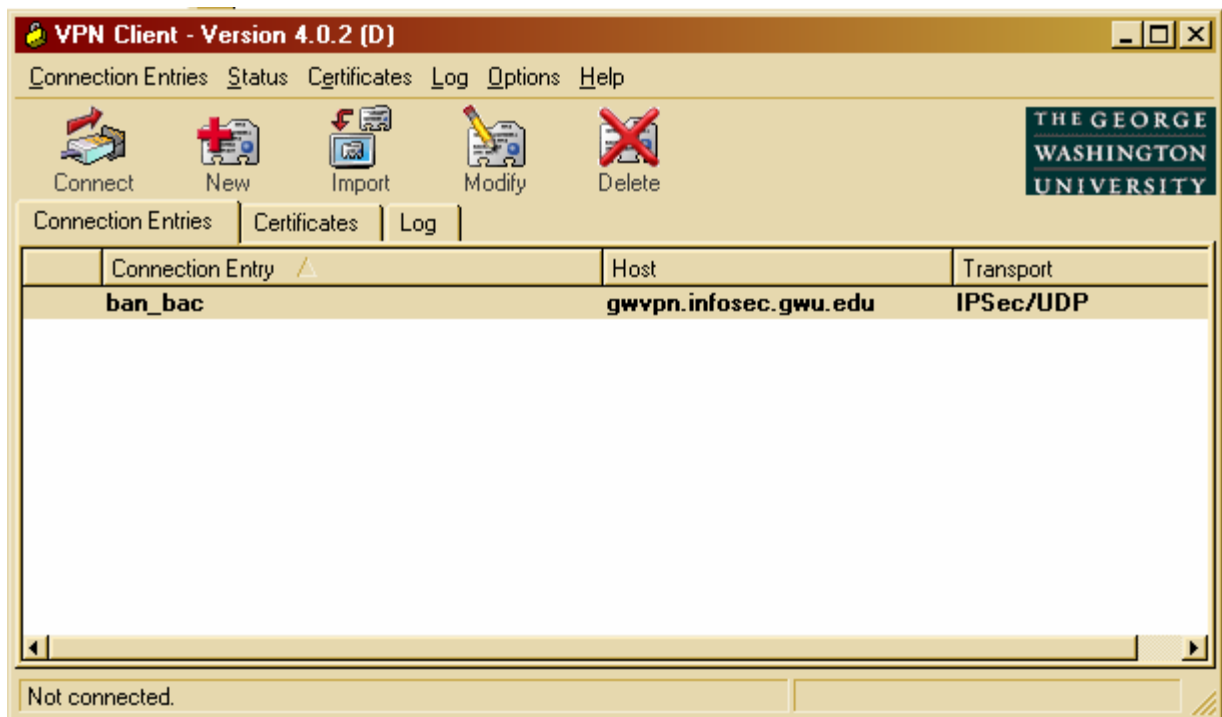


For GW Internal use only

10) Following the reboot, you will find a new program in your menu:



11) After clicking on the GBUSSNET Dialer icon, the following screen will appear:



12) Double click on the **ban\_bac** entry and the following screen will appear:



13) Enter your **EMAIL** username and password. You will notice a lock icon appear in your toolbar and are now connected through the University's VPN. You will now be able to access the Citrix system as you would from your desktop.