



ISS PatchLink User Experience Guide

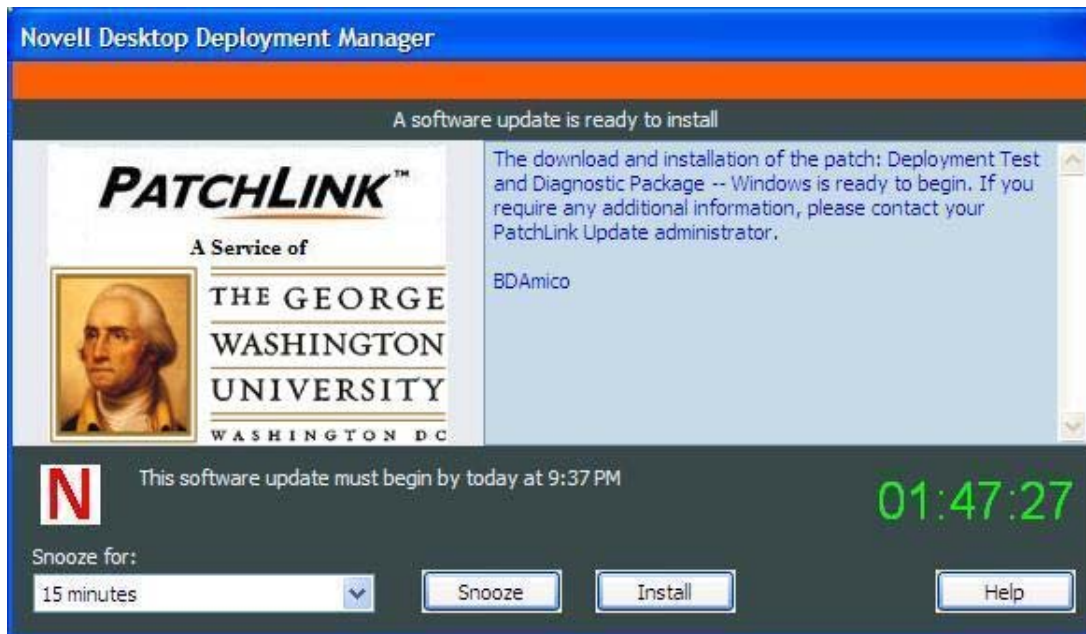


ISS-Patchlink Users Experience Guide

Patchlink Update Management is software used by ISS staff to distribute software patches and updates to ISS workstations. By default, Patchlink will automatically deploy critical patches for Microsoft Windows operating systems and versions of the Microsoft Office application suite.

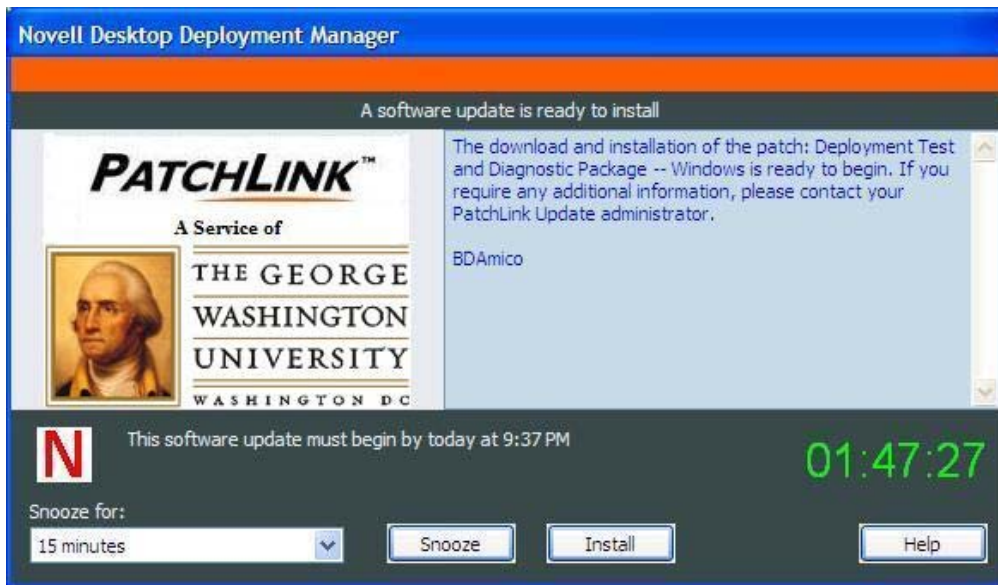
Receiving Patches

Patch Management will run as a background activity on your computer and should only be noticeable when a patch or group of patches is deployed to your station. When a patch has been deployed to your workstation and is ready to be installed, you may see a message like this. You may click “Install” to install the patch, or “Snooze” to postpone it.



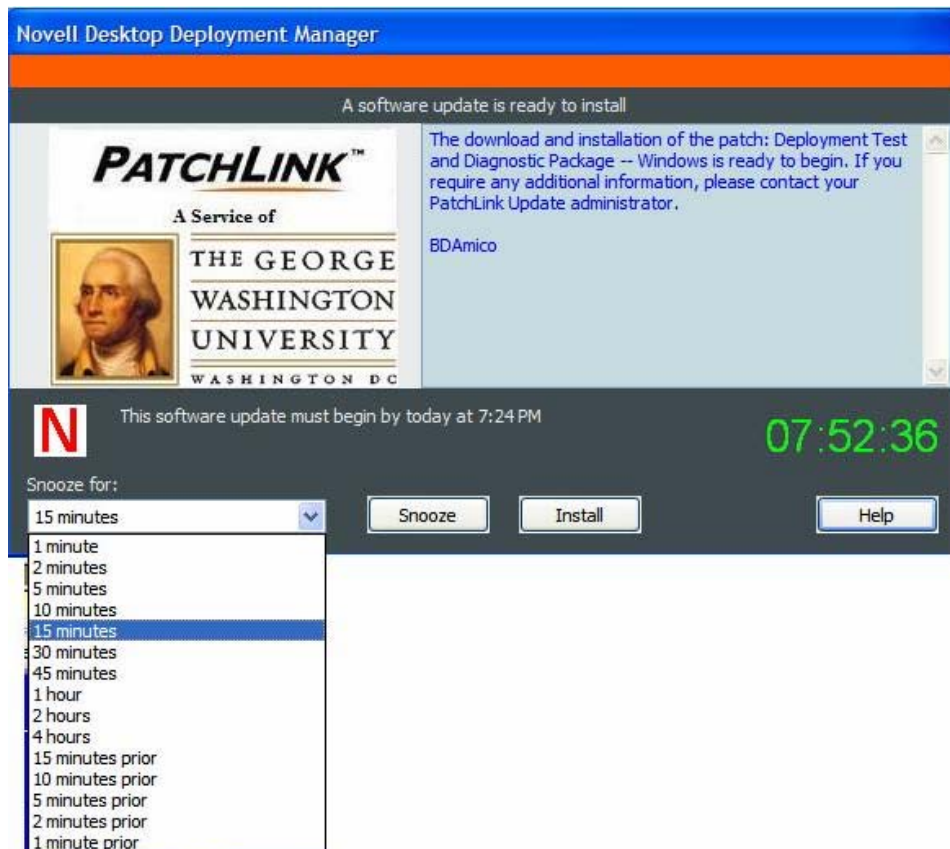
Installing a Patch

To install a patch click “Install Now” when you receive this dialog box:



Snoozing a Patch

If the deployment time is inconvenient you may click “Snooze” and choose the length of the snooze.

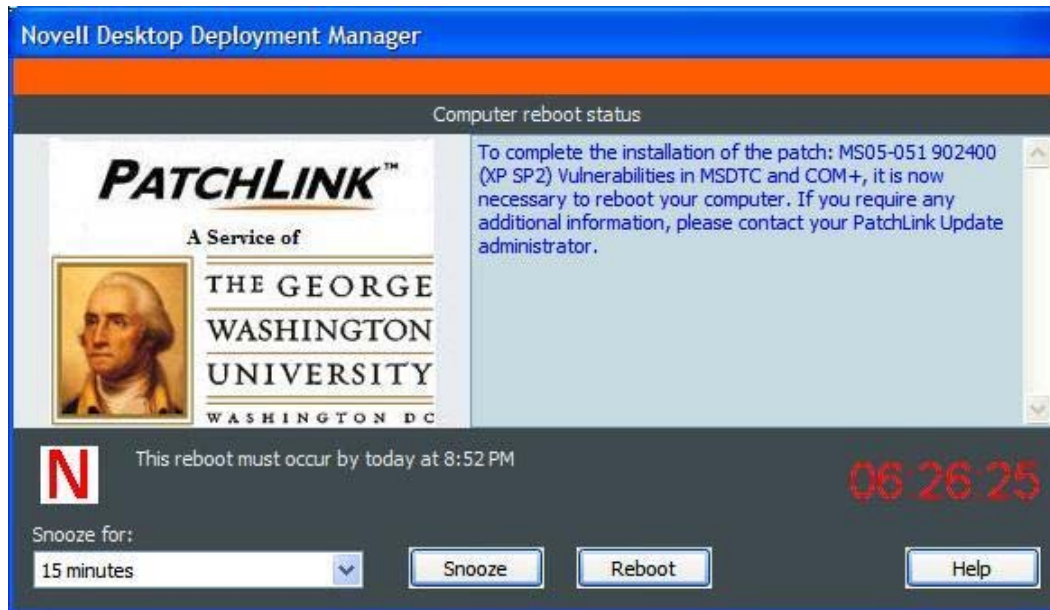


If you have a deployment snoozed there will be an icon with a PL (PatchLink) on your taskbar.



Snoozing a Reboot

Once you have installed a patch you will have the option to reboot your computer at that time, or to snooze the reboot.



When your snooze time is up, the dialog will look like this. If you do not click reboot at this time, the system will reboot when the timer on the right has counted down.

